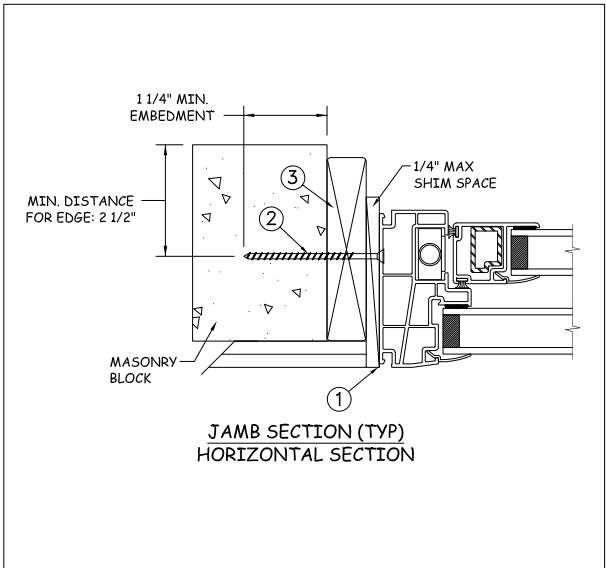
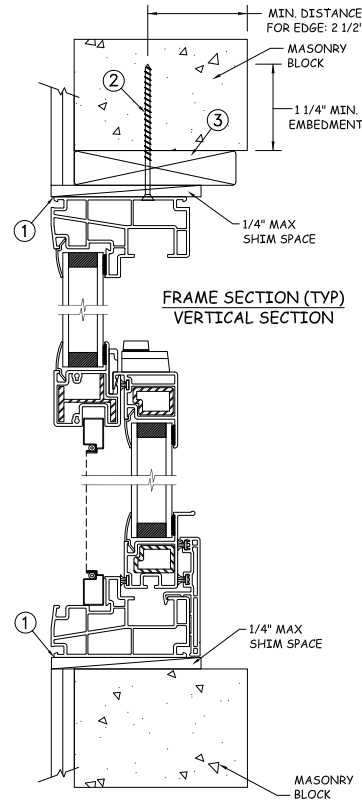
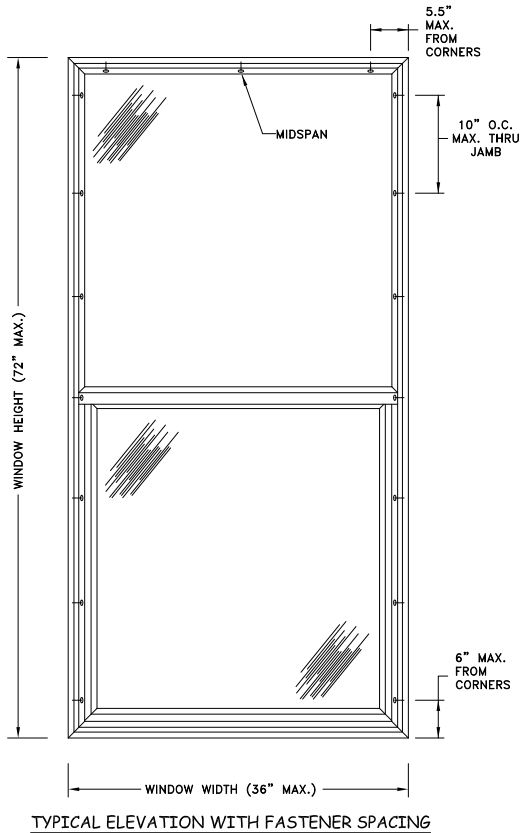


MASONRY INSTALLATION



Max Frame	DP RATING	IMPACT
36 x 72	+65/-70	NO

Installation Notes:

1. Seal flange/frame to substrate.
2. Use 3/16" ITW Tapcon or equivalent fasteners through frame with sufficient length to penetrate a minimum of 1 1/4" into concrete or masonry at each location with a 2 1/2" min from edge distance. For concrete (min. f'c = 3000psi) or masonry substrate (CMU shall adhere to ASTM C90).
3. Host structure (wood buck, masonry, steel) to be designed and anchored to properly transfer all loads to the structure. The host structure is the responsibility of the architect or engineer of record for the project of installation.

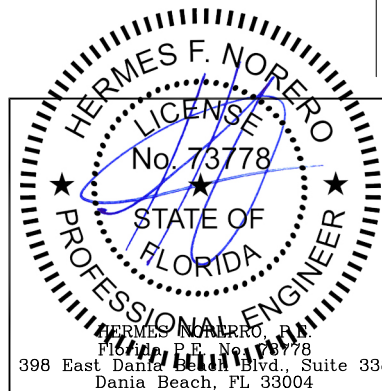
General Notes:

1. The product shown herein is designed, tested and manufactured to comply with the wind load criteria of the adopted International Building Code(IBC), the International Residential Code(IRC), the Florida Building Code(FBC) including HVHZ and the industry requirement for the stated conditions.
2. All glazing shall conform to ASTM E1300.
3. At minimum, glazing shall be 1/8" annealed insulating glass.
4. Use structural or composite shims where required.
5. Installation methods can be interchanged within the same opening.
6. An impact protective system is required where wind borne debris protection is mandated by local building code.
7. Maximum sizes are buck sizes and do not include fin or flange.

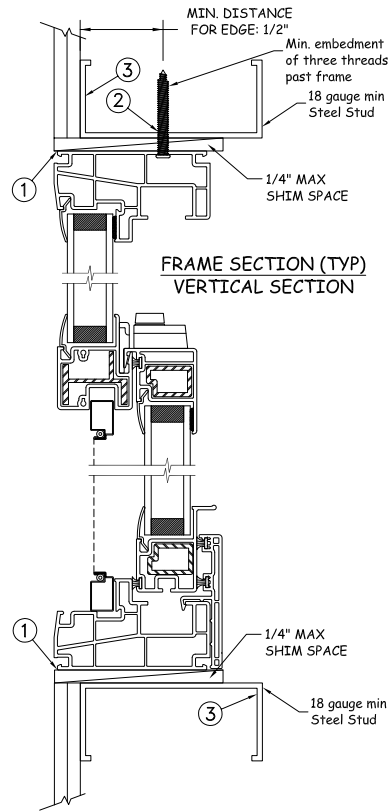
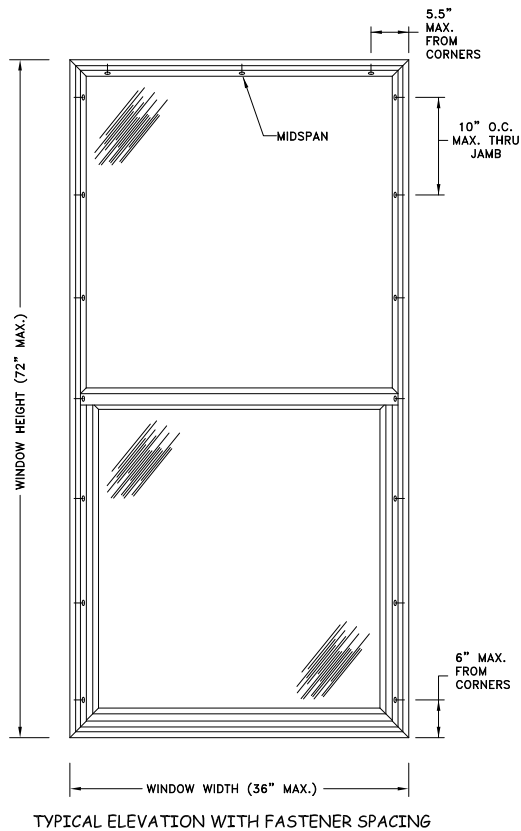
This schedule addresses only the fasteners required to anchor the window to achieve the rated design pressure up to the size limitations noted. It is not intended as a guide to the installation process and does not address he sealing consideration that may arise in different wall conditions. For the complete installation procedure, see the instructions packaged with the window or go to www.jeld-wen.com/resources/installation.

DISCLAIMER:

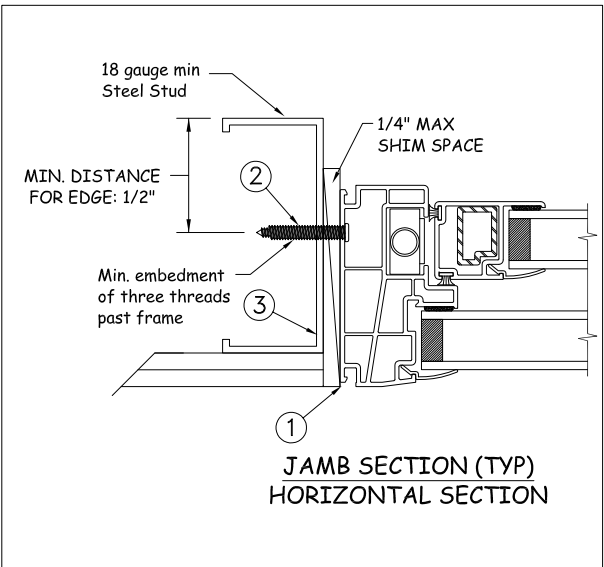
This drawing and its contents are confidential and are not to be reproduced or copied in whole or in part or used or disclosed to others except as authorized by JELD-WEN Inc.



PROJECT ENGINEER: --	DATE: 04/26/2017	JELD-WEN	3250 Lakeport Blvd Klamath Falls, OR. 97601 Phone: (541) 882-3451	
DRAWN BY: J.HAWKINS	SCALE: NTS		Premium Atlantic Vinyl Single Hung Window	
CHECKED BY: D.BELAU	TITLE:			
APPROVED BY: J.GOOSSEN				
PART/PROJECT No.:				
D014587				
IDENTIFIER No.	PLANT NAME AND LOCATION:	CAD DWG. No.:	REV: A	SHEET 3 OF 4



STEEL INSTALLATION



Max Frame	DP RATING	IMPACT
36 x 72	+65/-70	NO

Installation Notes:

1. Seal flange/frame to substrate.
2. For anchoring into metal framing use #8 TEK Self Tapping screws with sufficient length to achieve a minimum embedment of three threads past the frame thickness. Steel substrate min. 18ga., fy = 33 ksi.
3. Host structure (wood buck, masonry, steel) to be designed and anchored to properly transfer all loads to the structure. The host structure is the responsibility of the architect or engineer of record for the project of installation.

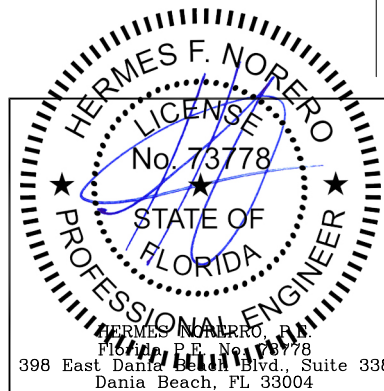
This schedule addresses only the fasteners required to anchor the window to achieve the rated design pressure up to the size limitations noted. It is not intended as a guide to the installation process and does not address he sealing consideration that may arise in different wall conditions. For the complete installation procedure, see the instructions packaged with the window or go to www.jeld-wen.com/resources/installation.

DISCLAIMER:

This drawing and its contents are confidential and are not to be reproduced or copied in whole or in part or used or disclosed to others except as authorized by JELD-WEN Inc.

General Notes:

1. The product shown herein is designed, tested and manufactured to comply with the wind load criteria of the adopted International Building Code(IBC), the International Residential Code(IRC), the Florida Building Code(FBC) including HVHZ and the industry requirement for the stated conditions.
2. All glazing shall conform to ASTM E1300.
3. At minimum, glazing shall be 1/8" annealed insulating glass.
4. Use structural or composite shims where required.
5. Installation methods can be interchanged within the same opening.
6. An impact protective system is required where wind borne debris protection is mandated by local building code.
7. Maximum sizes are buck sizes and do not include fin or flange.



PROJECT ENGINEER: --	DATE: 04/26/2017	JELD-WEN	3250 Lakeport Blvd Klamath Falls, OR. 97601 Phone: (541) 882-3451	
DRAWN BY: J.HAWKINS	SCALE: NTS			
CHECKED BY: D.BELAU	TITLE: Premium Atlantic Vinyl Single Hung Window			
APPROVED BY: J.GOOSSEN				
PART/PROJECT No.: D014587				
IDENTIFIER No.	PLANT NAME AND LOCATION:	CAD DWG. No.:	REV: A	SHEET 4 OF 4